

# Distribute 1080 True High Definition Video throughout the home easier and further than before

## Component Video Distribution Hub

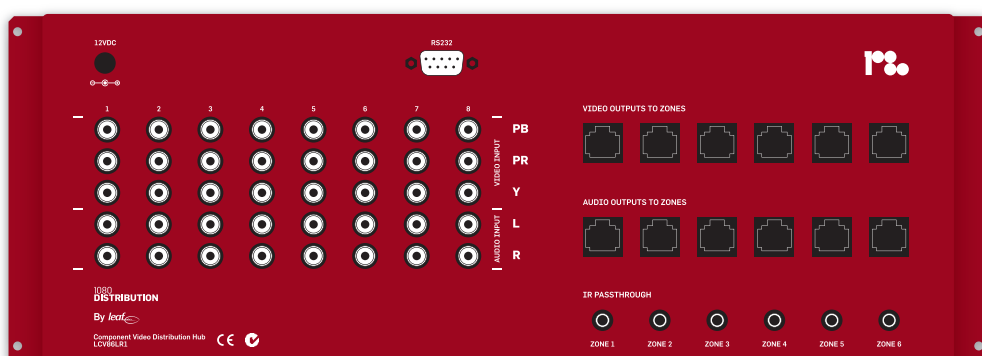
The 1080 Distribution LCV86LR1 makes it easy to distribute True High Definition Video, Analogue Audio and IR control throughout the home using standard solid core or stranded Cat5 cable.

The LCV86LR1 incorporates **D-Bus** patented technology to encode and transmit A/V signals that are then decoded by the LCB20LR1 Component Video Active Wall Plate.

The combination of the LCV86LR1 and the LCB20LR1 enable the transmission of True Hi Definition Video over cable runs up to 100m.

Unlike traditional Cat5 video distribution systems, the LCV86LR1 **does not use loss-inducing baluns**.

The LCV86LR1 provides power for the LCB20LR1 across Cat5 cable **without the need for remote plug packs**.



### Technical Specifications:

#### Inputs

- 8 True High Definition Component Video
- 8 Stereo Analogue Audio
- 8 IR Flasher Inputs (3.5mm)
- 1 Serial DB9 RS232

#### Outputs

- 6 Cat5 Outputs for Video Distribution and Power for the LCB20LR1
- 6 Cat5 Outputs for Audio and IR Distribution

#### External Power Supply

110-240 Volts

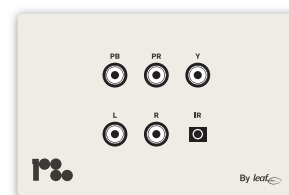
#### Dimensions – LCV86LR1

H132.5mm W435.5mm D 32.75mm  
On wall mounting option  
3 U Rack Mount Kit available separately

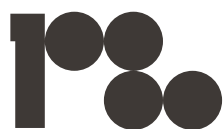
#### Dimensions – LCB20LR1

H 90mm W135mm D21.3mm  
Rear Mounting Holes for US – Aus – NZ – UK flush boxes

**Made in Australia**



LCB20LR1 Component Video Active Wall Plate  
available separately



[www.1080distribution.com](http://www.1080distribution.com)  
[info@1080distribution.com](mailto:info@1080distribution.com)

By leaf 